

THE MTULI FOUNDATION



GREENLIGHT GREENPAPER

SPRING 2021

The Project Team presented the Mtuli Foundation with guide books about sustainable agriculture and irrigation solutions, along with outreach to **30** organizations to support Mtuli's efforts in funding and partnerships.



CREATED BY GREENLIGHT AT
ARIZONA STATE UNIVERSITY:

ERIN TRAUNTVEIN | KATIE PASCAVIS
RYLEE RICHARDSON | NATHAN SCHURTER

PROJECT PARTNER: MTULI FOUNDATION
ROBERT MHNAGO

Visit GLSolutions.org to learn more & donate. Contact info@GLSolutions.org to get involved.



[@GreenLightSolutionsFoundation](https://www.linkedin.com/company/greenlightsolutionsfoundation)

[@GreenLightSolutions](https://www.instagram.com/greenlightsolutions)

[@GreenLightSolutionsFoundation](https://www.facebook.com/greenlightsolutionsfoundation)

[@GLSFoundation](https://twitter.com/GLSFoundation)

Copyright © 2021 GreenLight Solutions Foundation. All Rights Reserved.

The Mtuli Foundation, based in Karonga, Malawi, combats extreme drought threatening their community's ability to grow their own food. Mtuli faces the challenge of garnering sufficient resources to fulfill their mission of reducing chronic poverty. Currently, the food system in place is very resourceful, reusing objects such as water bottles or sacks, but these methods could still be improved upon. This presented the opportunity to improve their agricultural systems and available resources by gaining more funding, establishing partnerships, and expanding their agricultural knowledge base. There was also a need for more educational materials for the local schools about sustainable agriculture.

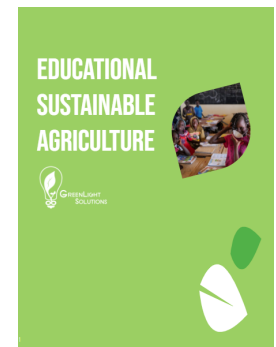


The team produced two types of deliverables: sustainable agriculture solutions and an outreach database. We created two solution guides outlining irrigation and agricultural best practices, including drip irrigation, rainwater harvesting, food storage, and more. While the first guide went into detail about these solutions, the second guide focused on educational materials that could be used to teach about sustainable agriculture.

Our project results include:

- **5** sustainable agriculture methods
- **5** irrigation methods
- **50** organizations in the database
- **30** organizations contacted
- Infographics

For outreach, the team created an email template to send to relevant organizations in order to establish new relationships with Mtuli Foundation. This was sent to a compiled list of **33** organizations. Some responses have been recorded and more are rolling in.



BENEFITS TO PROJECT PARTNER

The Project Partner gained many new connections through the team's outreach. Furthermore, they gained new knowledge of improvements that could be made to their current agricultural system, along with possible *new* systems to increase the productivity of their farms. They also gained educational materials about agriculture and sustainability for the local schools and community members.

BENEFITS TO SOLUTIONEERS

While implementing the project, we learned a great deal about sustainable agriculture and how to build meaningful partnerships.

BENEFITS TO THE COMMUNITY

By implementing the recommended solutions, the community could reduce chronic poverty in their community through enhancing practical skills, capacity building, and food security.